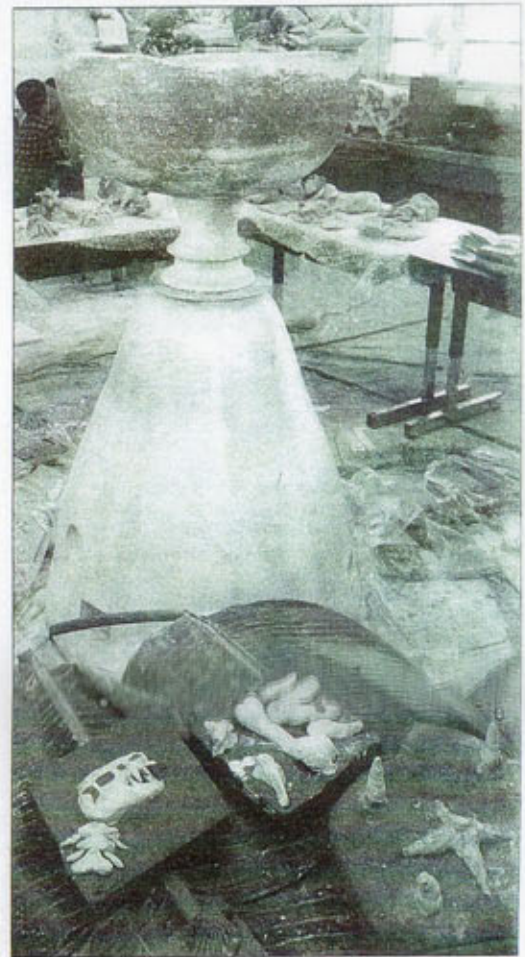




BARON SEKIYA / NORTH HAWAII NEWS  
ABOVE: Ethan Souza makes his move on a chess set created by students which pits dinosaurs against mammals. The clay chess pieces are still drying before being glazed and fired but the students couldn't resist playing a game. The chess pieces were one of the projects worked on by students in the Elements Sculpture Project at Waimea Middle School.



## Summer's art project thinks BIG

Above, right: Mac Paulson, left, and Louise Johansson cut clay to create tiles to build artwork upon for the Elements sculpture project. The sculpture being built at Waimea Middle School will go to North Hawaii Community Hospital when completed. At right: Tiles are being dried which will be glaze, fired and mounted on the large vase in the background for the Elements Sculpture Project. The top of the Elements Sculpture Project at Waimea Middle School where the focus is on the element earth.

## Science and spontaneity



—MICHAEL DARDEN—WHT

Elements Sculpture Project student Brandon Wong places a bird sculpture on top of a vase with help from instructor Peter Kowalke Wednesday at Waimea Middle School. The project is aimed at teaching youngsters with a combination of science and art. Once finished, the collaborative sculpture will be displayed at North Hawaii Community Hospital.